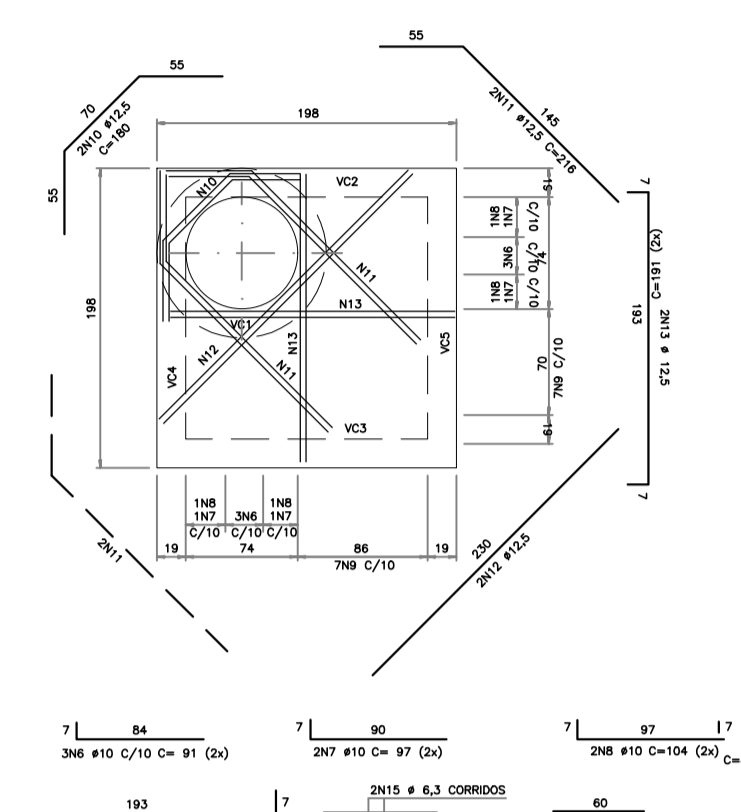
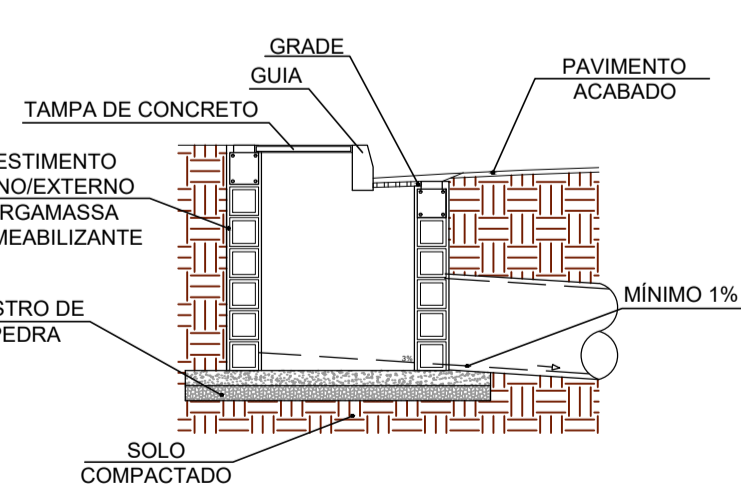
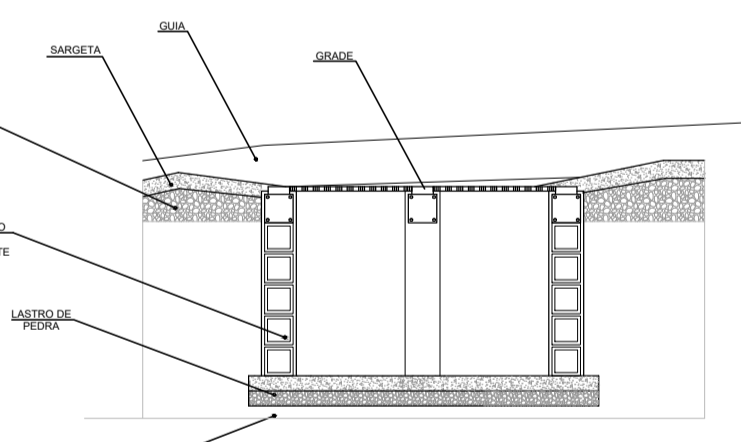
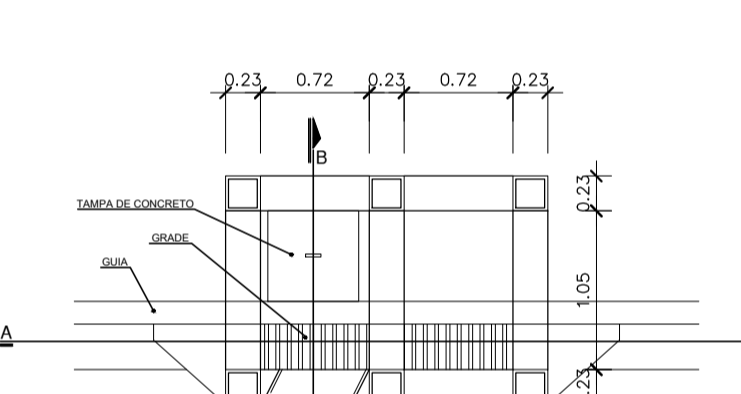


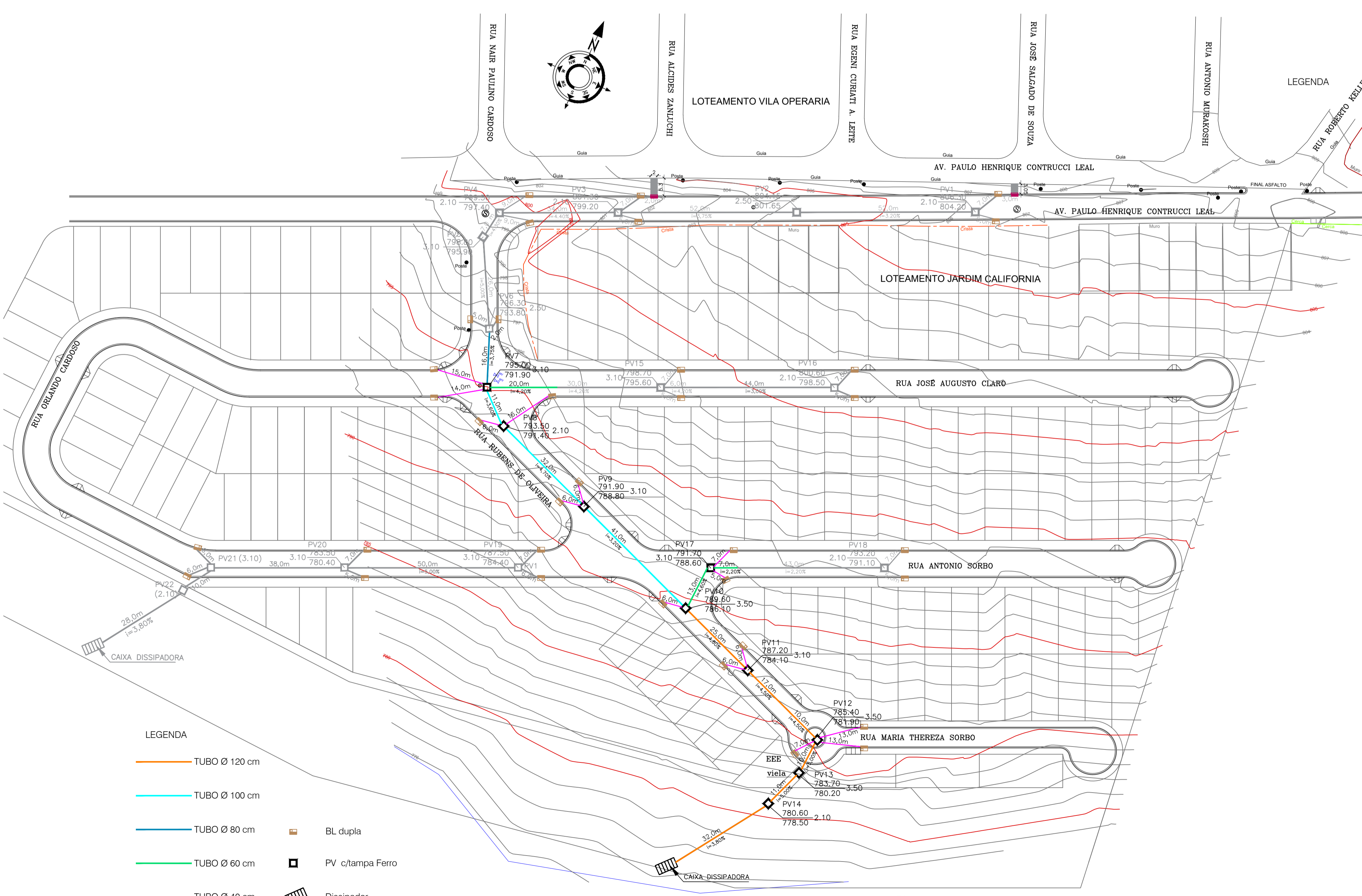
POÇO DE VISITA
ESCALA 1:50



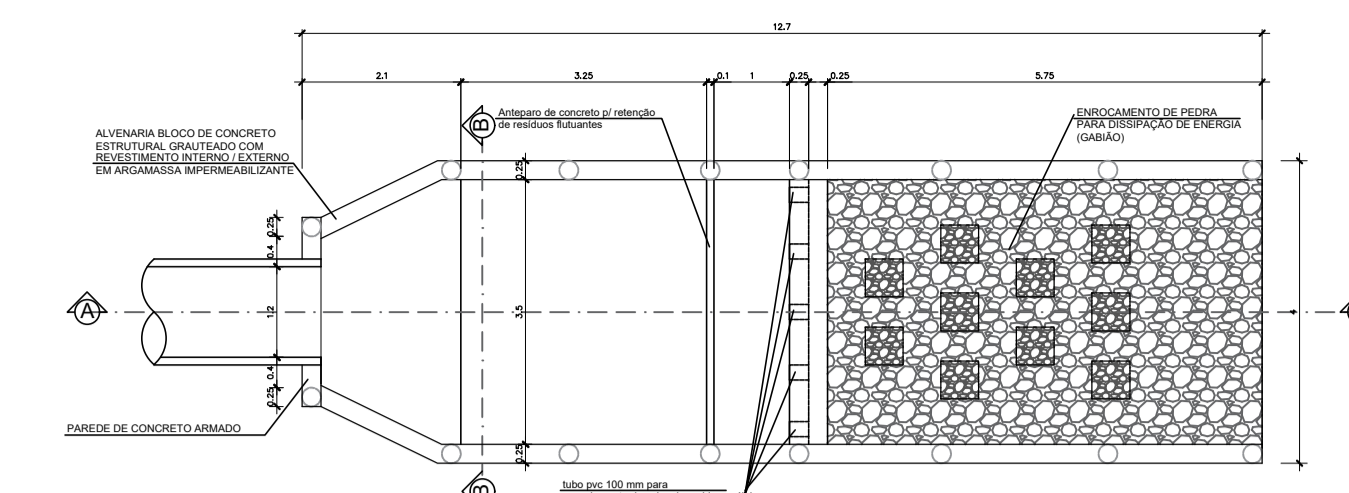
LAJE SUPERIOR DO POÇO DE VISITA
ESC: 1:50



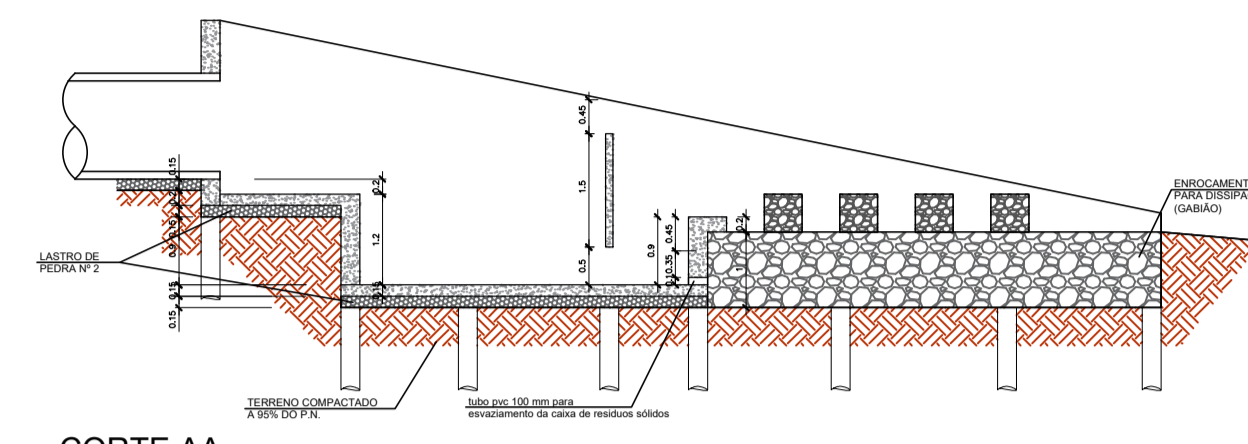
BOCA DE LEÃO DUPLA
ESCALA 1:50



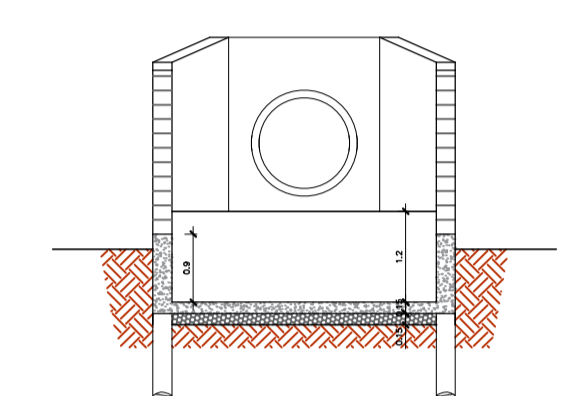
- LEGENDA
- TUBO Ø 120 cm
 - TUBO Ø 100 cm
 - TUBO Ø 80 cm
 - TUBO Ø 60 cm
 - TUBO Ø 40 cm
 - BL dupla
 - PV c/tampa Ferro
 - Dissipador



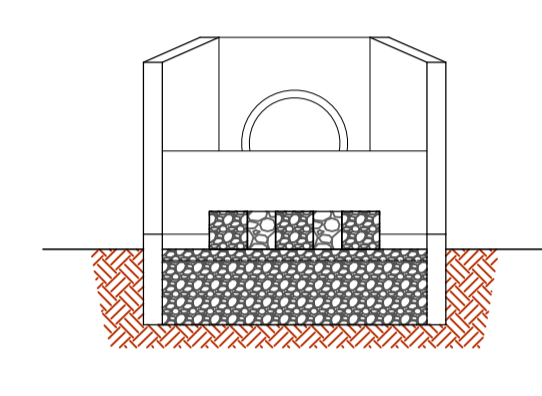
PLANTA BAIXA
ESC: 1:100



CORTE AA
ESC: 1:100

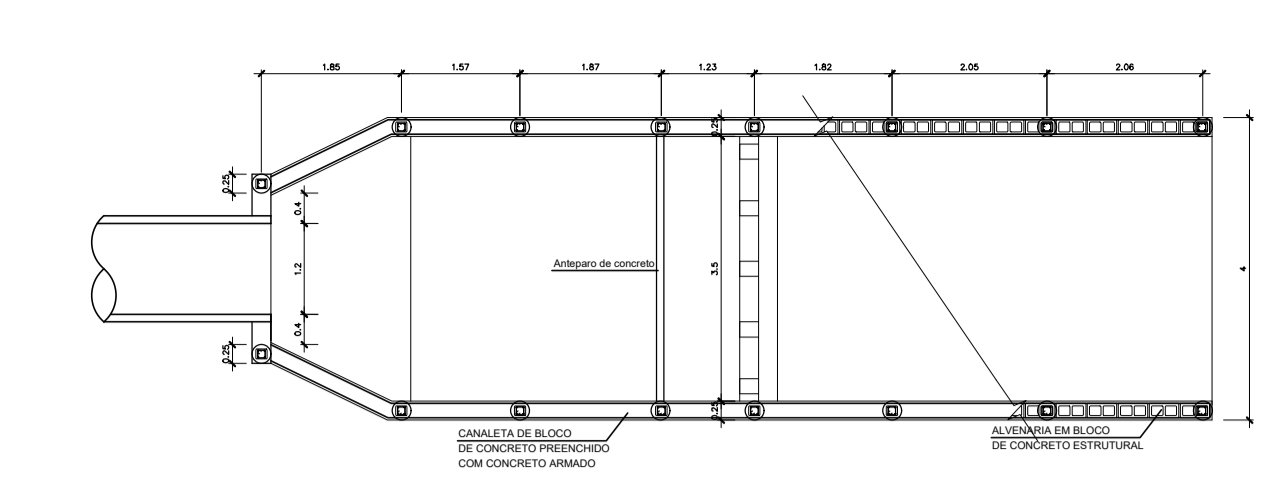


CORTE BB
ESC: 1:100

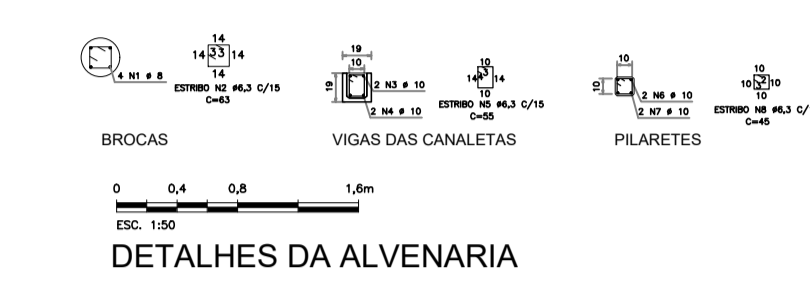


ELEVACÃO FRONTAL
ESC: 1:100

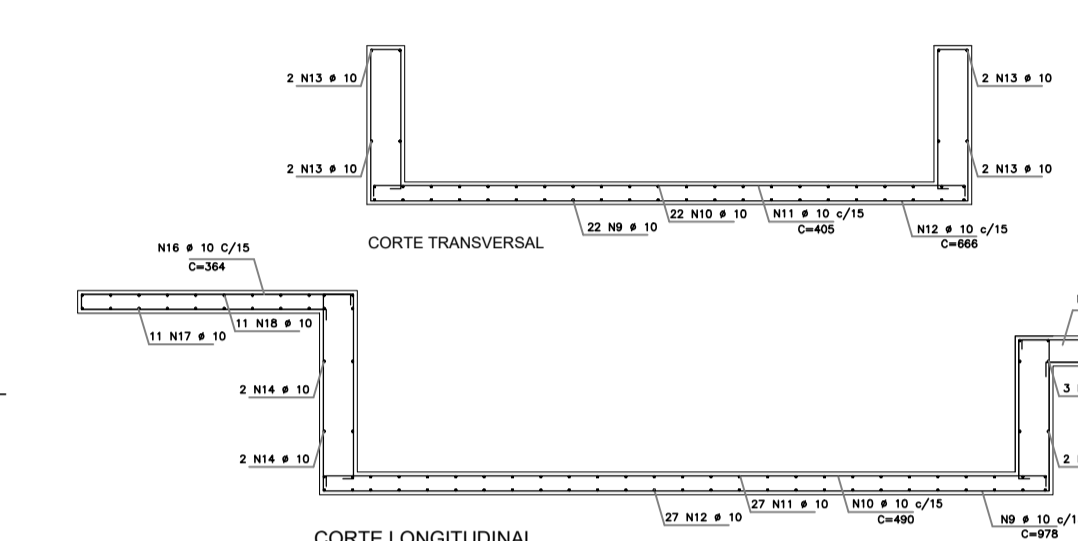
DETALHES DO DISSIPADOR
ESCALA 1:100



PLANTA BAIXA
ESC: 1:100



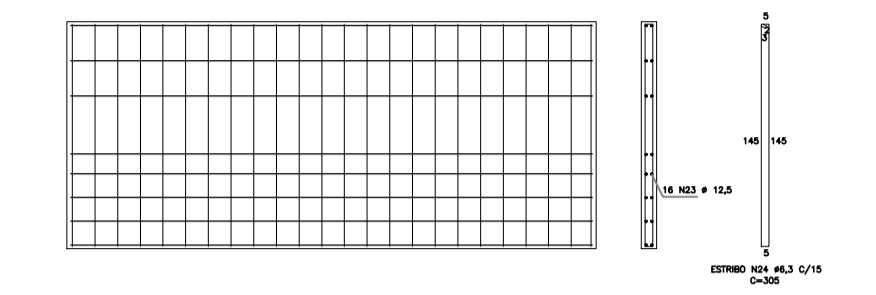
DETALHES DA ALVENARIA



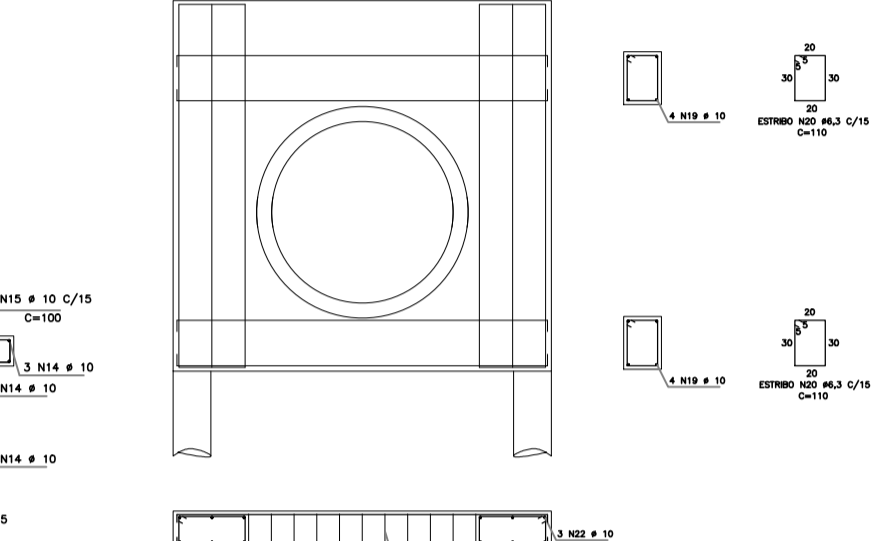
CORTE TRANSVERSAL
ESC: 1:100

CORTE LONGITUDINAL
ESC: 1:100

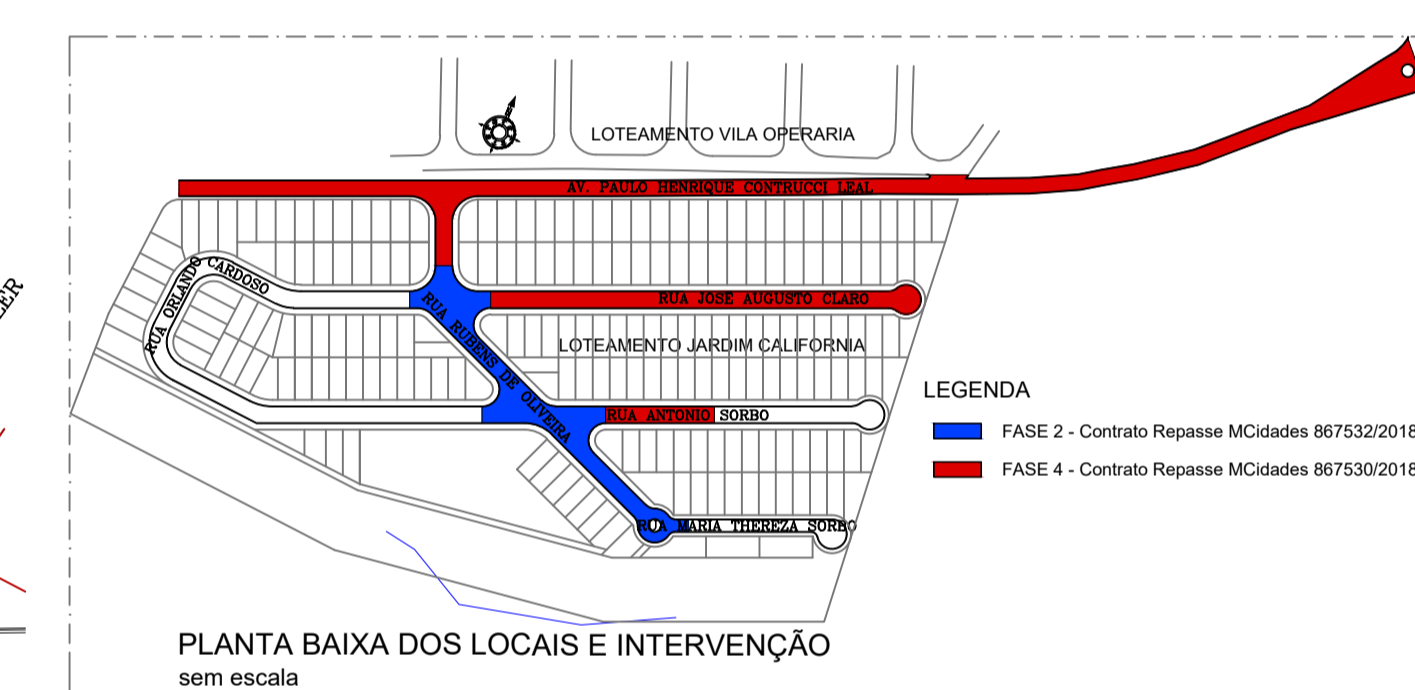
DETALHES DO FUNDO EM CONCRETO ARMADO



DETALHES DO ANTEPARO DE CONCRETO ARMADO



DETALHES DA PAREDE DE CONCRETO ARMADO



PREFEITURA DA ESTÂNCIA TURÍSTICA DE AVARÉ
SECRETARIA MUNICIPAL DE PLANEJAMENTO E TRANSPORTES

OBRA
**INFRAESTRUTURA JARDIM CALIFÓRNIA
PARTE 2**

LOCAL
Rua Rubens de Oliveira, Rua José Augusto Claro, Rua Antonio Sorbo,
Rua Maria Thereza Sorbo e Rua Orlando Cardoso - Avaré/SP

ÁREA TÉCNICA
ENGENHARIA

Nº FOLHA
01/04

TÍTULO
PROJETO DE GALERIA DE ÁGUAS PLUVIAIS

ESCALA
ESCALAS INDICADAS

DATA
MARÇO/2019

PREFEITURA MUNICIPAL DE AVARÉ
SECRETÁRIO DE PLANEJAMENTO E TRANSPORTES
Alexandre Leal Nigro
CREA 5060938563